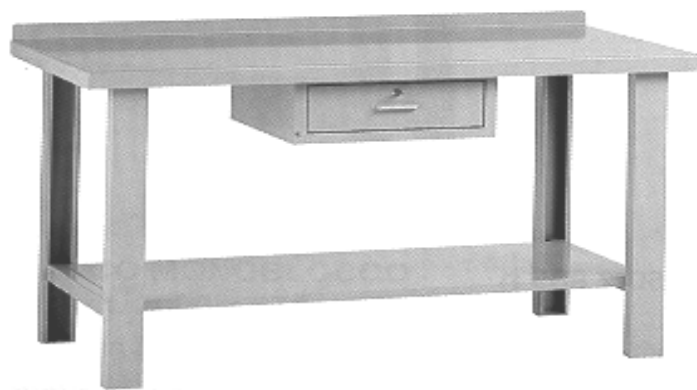


DETACHABLE WORKBENCHES

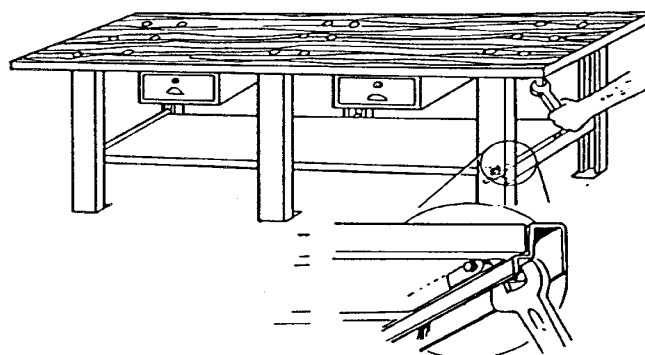
installation instructions



1

UNDERMOUNTS ASSEMBLY.

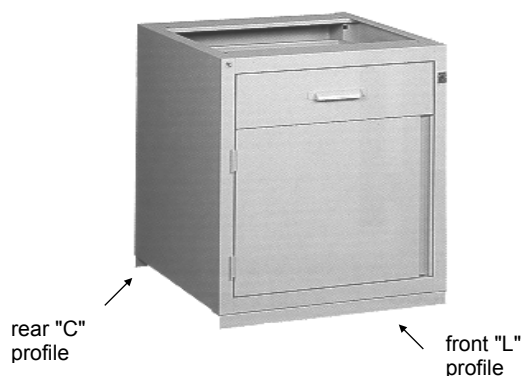
Put sides in vertical position and proceed to the assembly of the undermounts, taking care to insert them in the appropriate fittings and secure them with the screws TE 8x16 and tab nuts.



2

INSERTION OF DRAWERS UNITS AND CHESTS.

Before mounting the work top, interlock the "L" profile on the front of the drawers unit/chest and the "C" profile in the back; support the drawers unit/chest on the undermount and interlock the profiles.



3

WORKBENCHES WITH WHEELS.

Mount the handle on the perforated side with 4 flanged screws TE 8x16 with nut. In the case of workbench art. 0435 the side with the handle does not have wheels, while in the workbenches art.0436-0439-0441 it is necessary to screw 2 braking swivel wheels, each with 4 flanged screws supplied TE 8x16 with nut. In the other side, screw the two fixed wheels.

Activate the brake to the wheels
and proceed as in step "1".

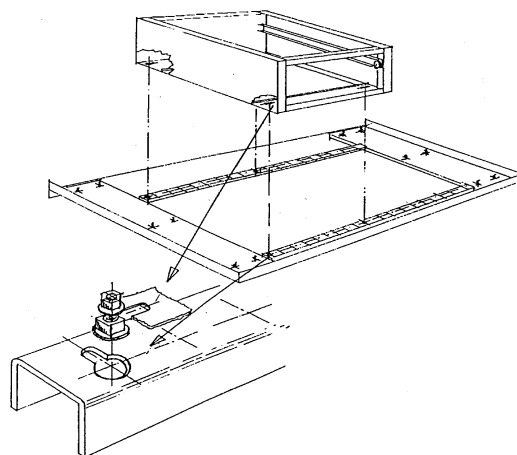


4

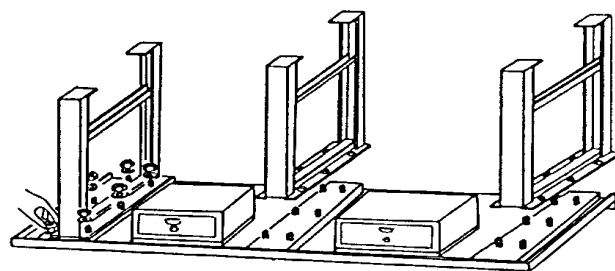
ASSEMBLY OF WORKBENCH DRAWERS WITH STEEL SHEET TOP.

Remove the drawer from the body shell.

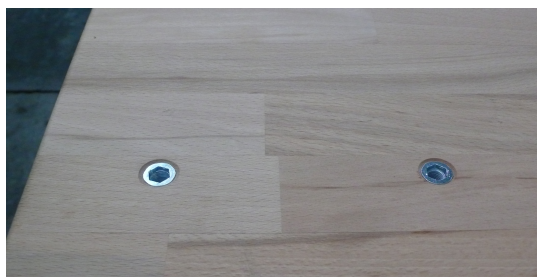
In the slots of the upside down body shell, tighten 4 oval head screws supplied 6x12 on their hex nuts with serrated washer. **The oval head of the screw must be outside of the body shell.** Position the heads near the round part of the slots of the work top and push the whole thing into the narrow part. **Fully tighten the nuts.**



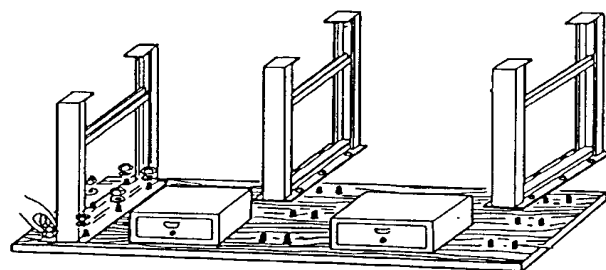
- 5 ASSEMBLY OF THE STEEL SHEET WORKTOP.**
Support the work top on the sides, making sure that the welded bolts fit into the slots. Screw the nuts and tighten completely.



(inverted image)



- 6 ASSEMBLY OF WOODEN WORKTOP.**
Support the work top on the structure and insert the screws 8x55 with nut and washer at the holes of the sides. Screw the nuts and tighten completely.



(inverted image)